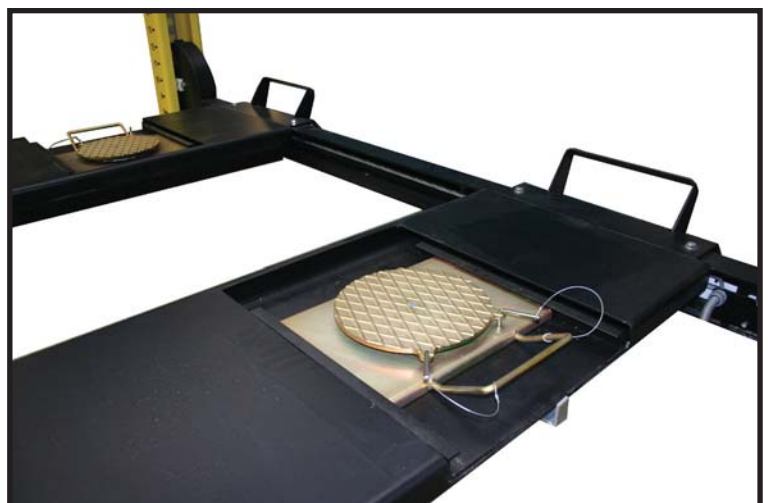


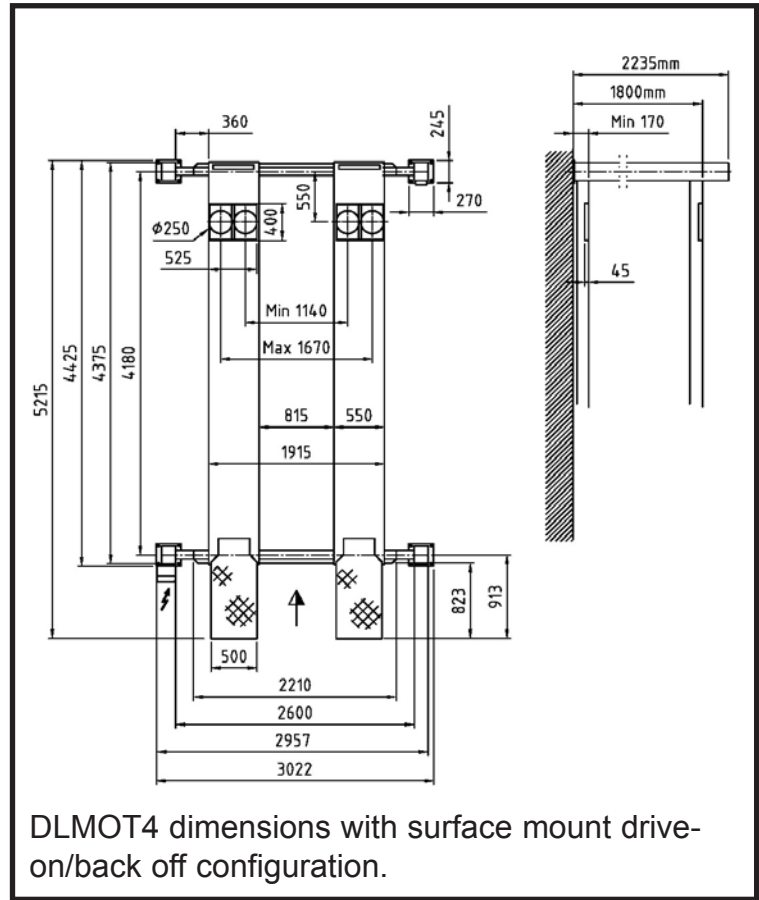
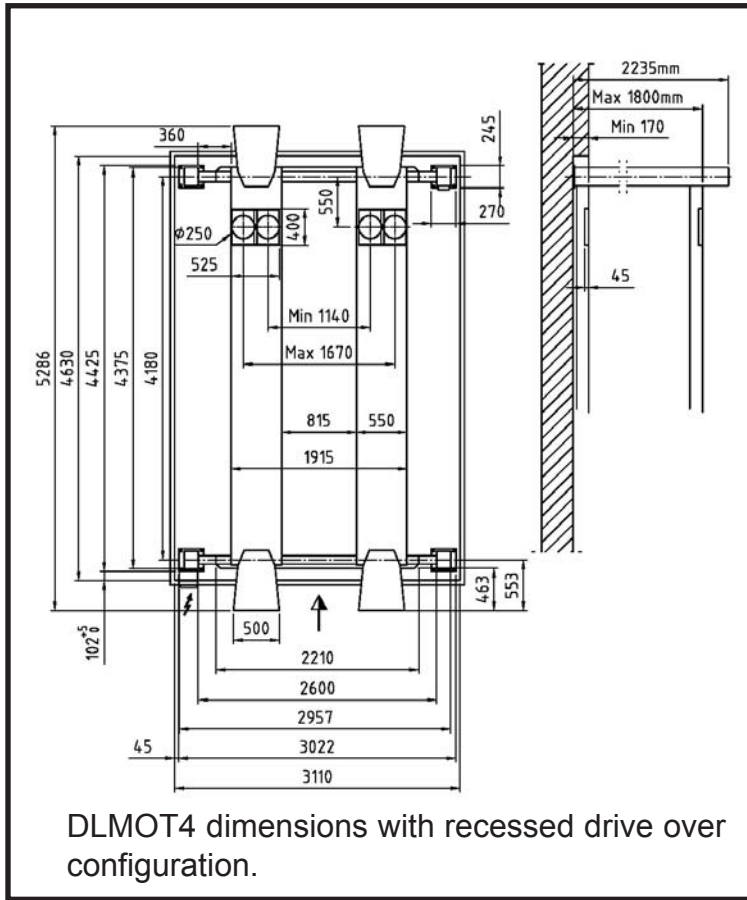
Dunlop DLMOT4 Lift

The New range of equipment from DUNLOP GARAGE EQUIPMENT includes this hydraulic 4 tonne capacity four post MOT lift.



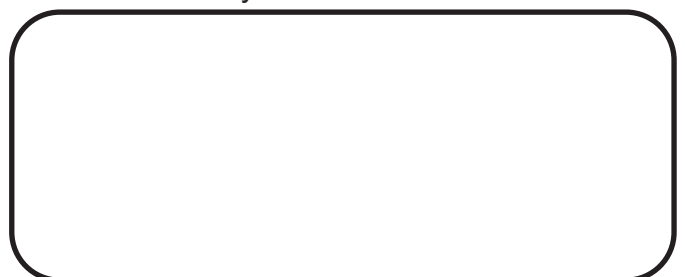
- 4 Tonnes Capacity
- Air operated safety locks
- CE Approved
- Platform Length = 4180mm
- External Width = 3360mm
- Width between posts = 2600mm
- Choice of 415v 3 phase or 240v single phase (Special Order)
- High quality recessed bearing turntables.
- Delivery, installation and basic training included.





The Dunlop JB20 is a double scissor, extra wide, jacking beam perfect for all auxilliary lifting on a four post lift or a pit. The extra width telescopic arm is wide enough to lift all class 4 vehicles for MOT testing. The double scissor construction enables vehicles to be jacked up an amazing 540mm above the lift platform!

Distributed by:-



DUNLOP GARAGE EQUIPMENT

153-165 Bridge Street, Northampton
 NN1 1QG United Kingdom

UK Distribution: Export:
 01604 828 557 +44 1604 828 540